



**SOFTWARE PARA ACTUALIZACION DE MENSAJES
UPDATING MESSAGES FILE SOFTWARE**

MANUAL DE INSTALADOR INSTALLER'S MANUAL MANUEL D'INSTALLATION
INSTALLATIONSHANDBUCH MANUAL DO INSTALADOR MANUAL DE INSTAL
INSTALLER'S MANUAL MANUEL D'INSTALLATION INSTALLATIONSHANDBUC
MANUAL DO INSTALADOR MANUAL DE INSTALADOR INSTALLER'S MANUA
MANUEL D'INSTALLATION INSTALLATIONSHANDBUCH MANUAL DO INSTALA
MANUAL DE INSTALADOR INSTALLER'S MANUAL MANUEL D'INSTALLATION
INSTALLATIONSHANDBUCH MANUAL DO INSTALADOR MANUAL DE INSTAL
INSTALLER'S MANUAL MANUEL D'INSTALLATION INSTALLATIONSHANDBUC
MANUAL DO INSTALADOR MANUAL DE INSTALADOR INSTALLER'S MANUA
MANUEL D'INSTALLATION INSTALLATIONSHANDBUCH MANUAL DO INSTALA
MANUAL DE INSTALADOR INSTALLER'S MANUAL MANUEL D'INSTALLATION

MANUAL DE INSTALADOR Y USUARIO
USER& INSTALLER'S MANUAL

ESPAÑOL
ENGLISH

INTRODUCCIÓN

Esta aplicación permite la actualización del fichero de mensajes de la unidad central.
Recomendada la actualización de este fichero si se utiliza el Lector Attendance ref. 6995 exclusivamente como lector de presencia.

Requisitos del ordenador:

- PC o compatible.
- Sistemas operativos: Windows 95/98/2000/NT/XP/7
- 16 MB de RAM.
- Puerto serie / USB disponible.

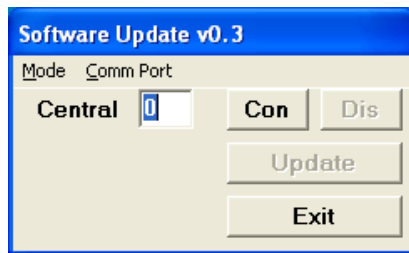
Ademas, para la conexión entre el PC y la unidad central deberá disponer del módulo Ref. 2466 (puerto serie) o Ref. 24661 (puerto USB). Ver esquema de montaje al final.

FUNCIONAMIENTO

a) Haga click sobre el icono de la aplicación

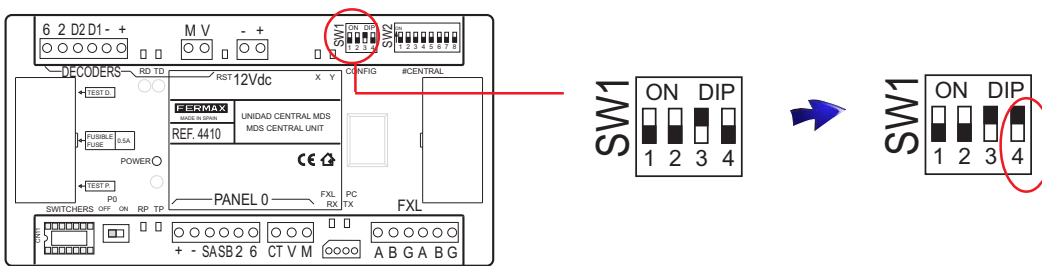


b) Aparecerá la siguiente pantalla:

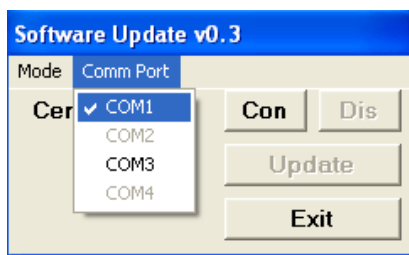


c) PASOS:

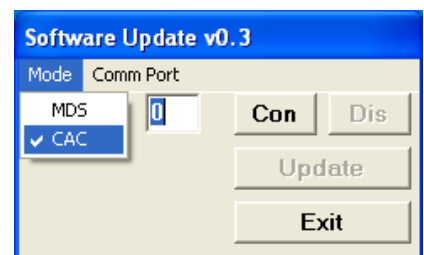
1. En el switch SW1 de la unidad central, colocar el dipswitch 4 a ON y resetear la central.



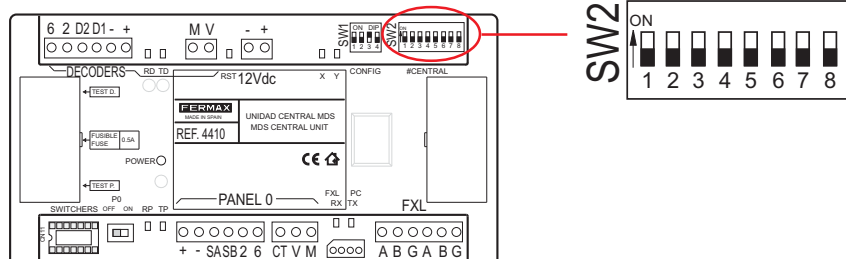
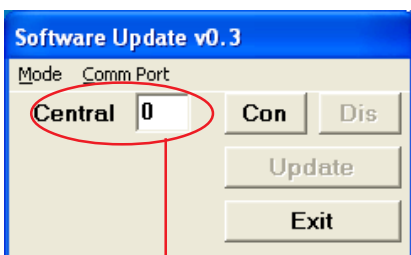
2. En el software 'Update.exe', configurar el puerto serie / USB, (el puerto USB, debe ser un puerto virtual de COM1, COM2, COM3 o COM4).



3. Seleccionar el Modo: CAC

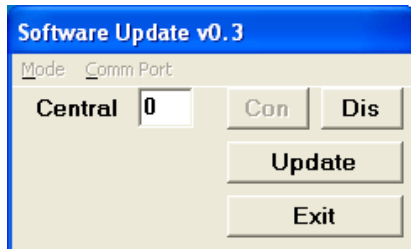


4. Central: NÚMERO

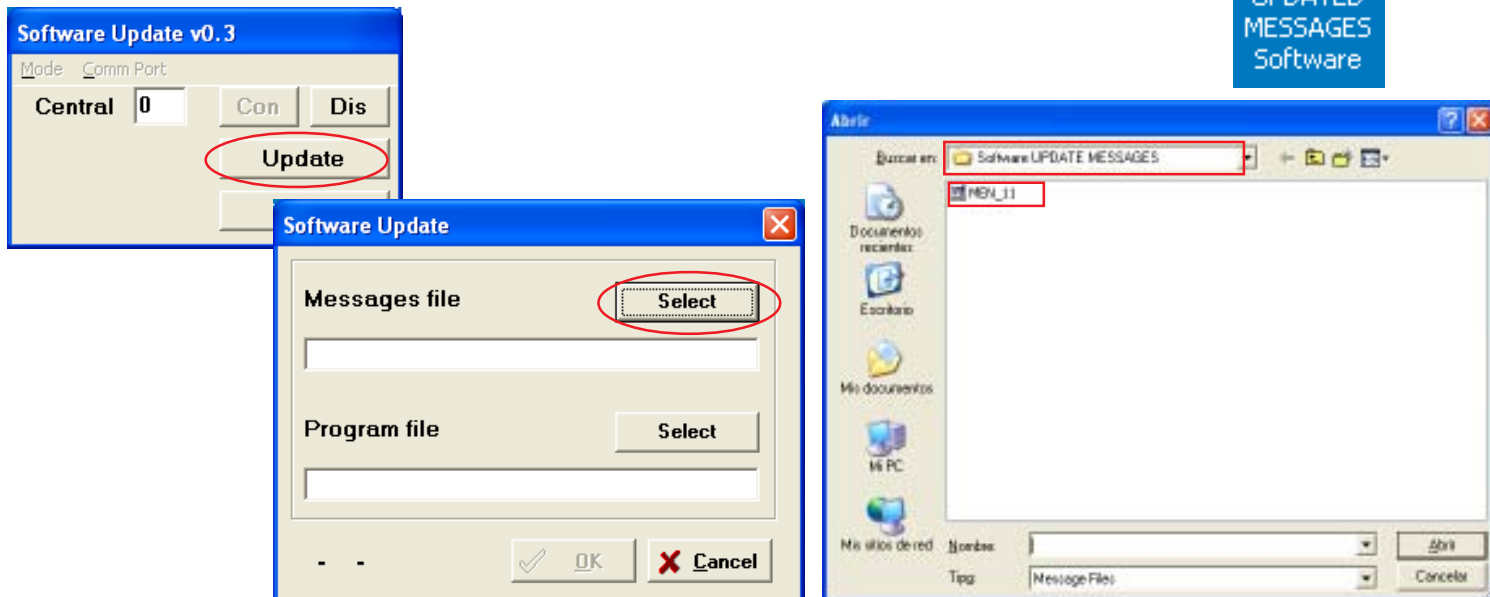


Configuración definida en el switch SW2 de la unidad central.
Por ejemplo: central número 0

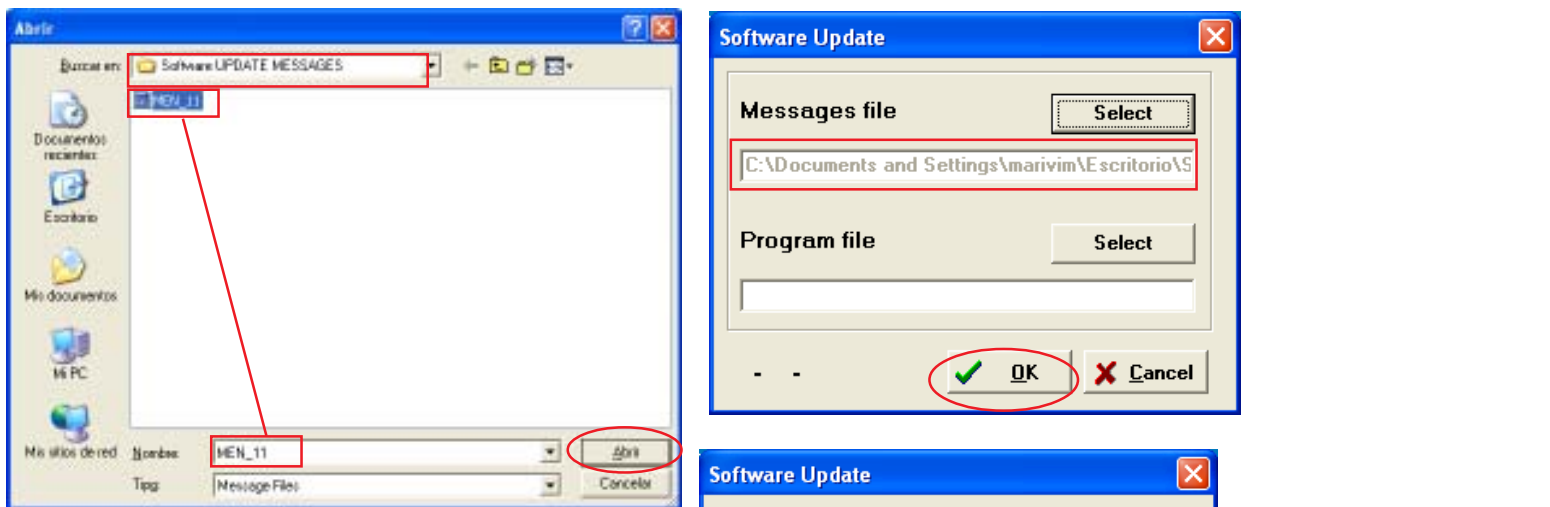
5. Pulsar el botón 'Con'



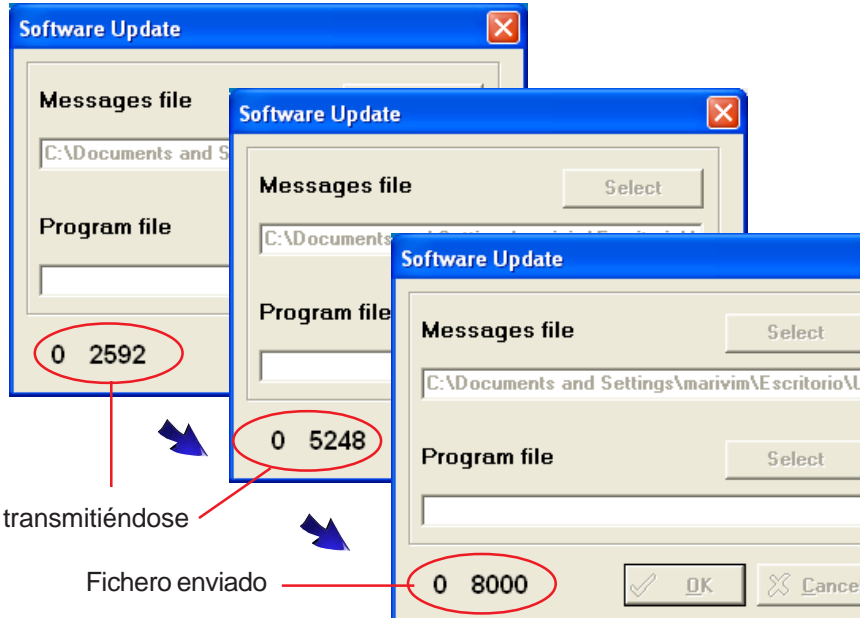
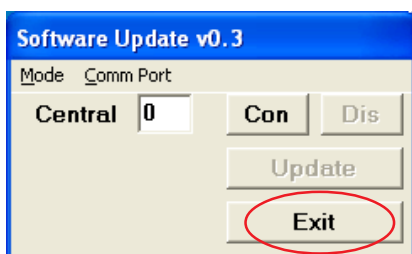
6. Pulsar el botón 'Update' y buscar el fichero de mensajes adjunto en la carpeta descargada de la web.



7. Seleccionar el fichero de mensajes y pulsar abrir. Aparecerá seleccionado el fichero en: «Message file», pulsar el botón 'OK' para enviarlo a la unidad central.



8. Salir de la aplicación.



Fichero transmitiéndose

Fichero enviado

9. Colocar el **dipswitch 4 a OFF** y resetear la central.

UPD SOFTWARE (Updating messages file on central unit)

INTRODUCTION

This application allows you to update the message file in the central unit. Updating this file is recommended if you are using the Attendance Reader ref. 6995 exclusively as a presence reader.

- Computer requirements:**
- PC or compatible.
 - Operative systems: Windows 95/98/2000/NT/XP/7
 - 16 MB RAM.
 - Serial port / USB available.

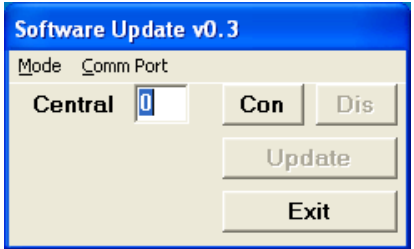
In addition, for connection between the PC and the central unit, you must have the Ref. 2466 module (serial port) or Ref. 24661 module (USB port). See set-up schematic at the end.

OPERATION

a) Click on the application icon

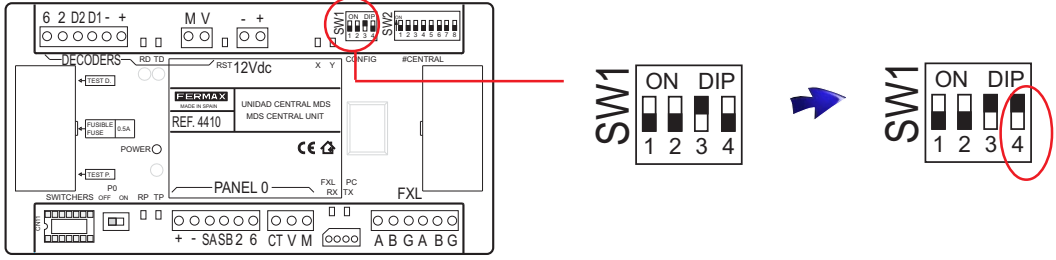


b) The following screen will appear:



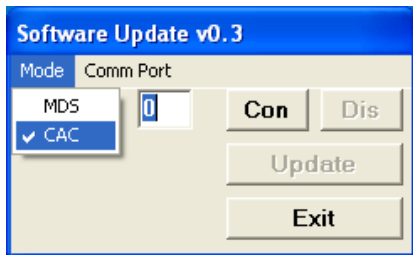
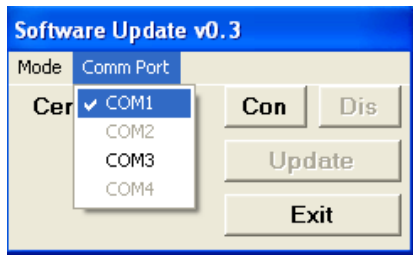
c) STEPS:

1. In switch SW1 of the central unit, set dipswitch 4 to ON and reset the central unit.

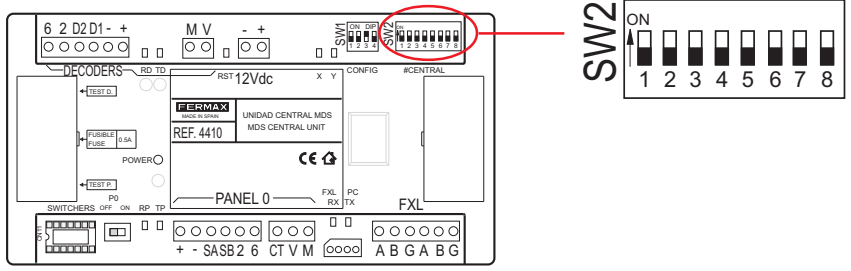
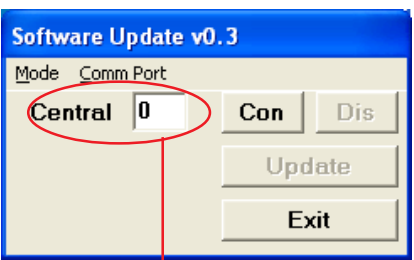


2. In the 'Update.exe' software, configure the serial port / USB, (the USB port must be a virtual COM1, COM2, COM3 or COM4 port).

3. Select Mode: CAC

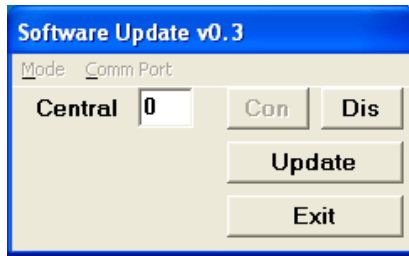


4. Central Unit: NUMBER

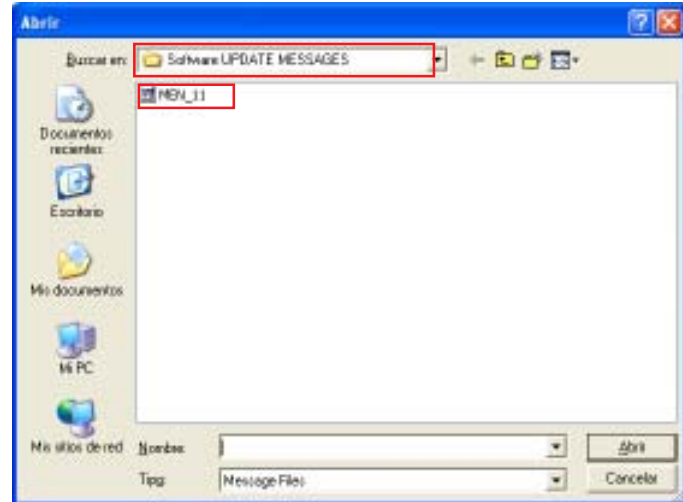
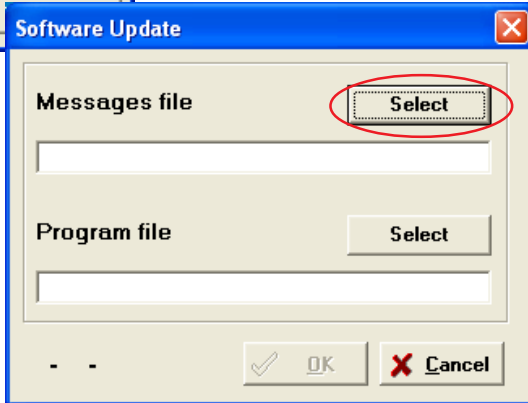
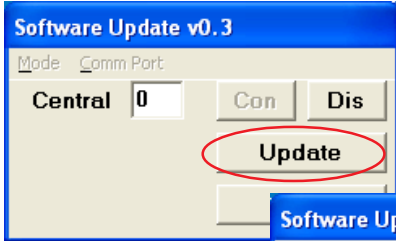


Configuration defined in the SW2 switch of the central unit.
For example: central unit number 0

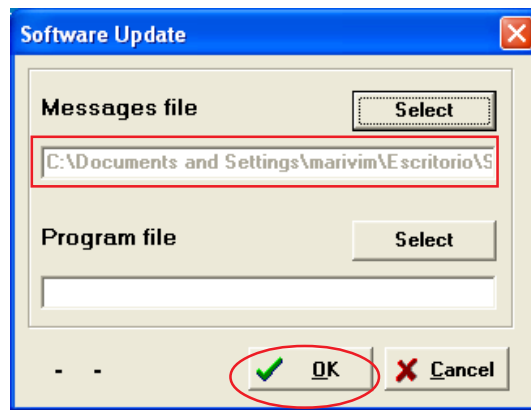
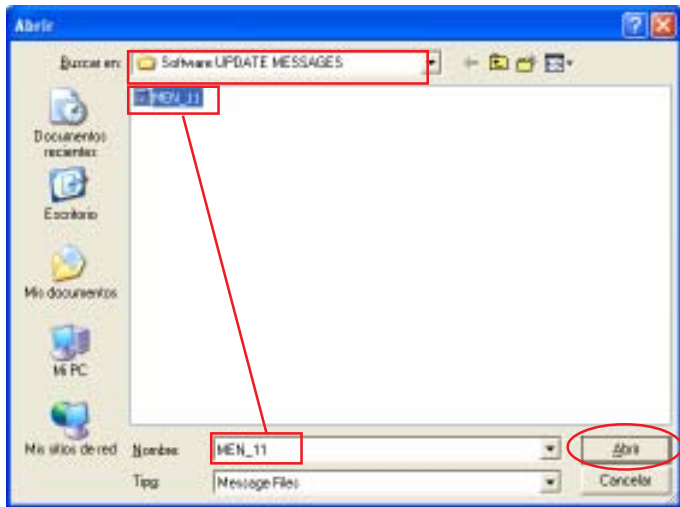
5. Press the 'Con' button



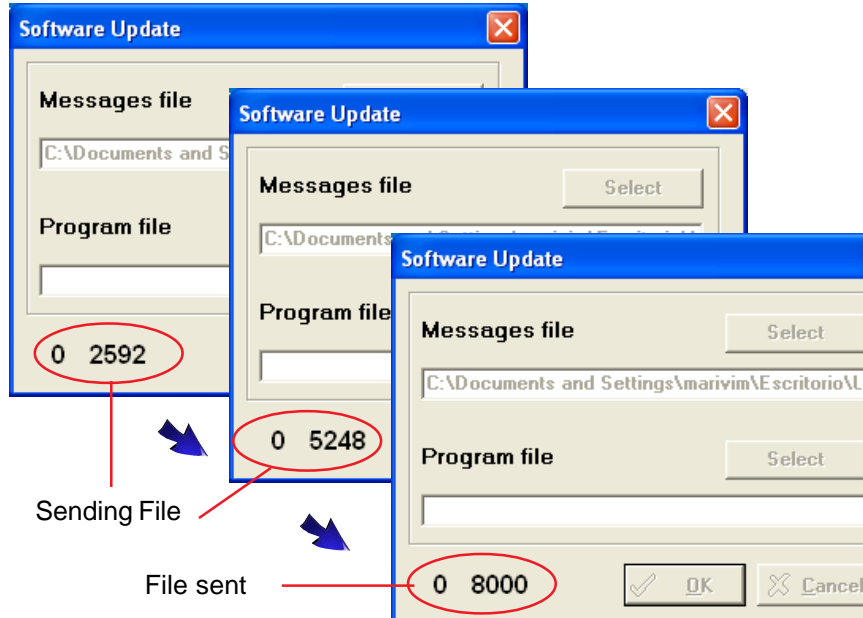
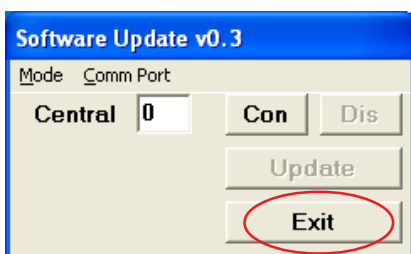
6. Press the 'Update' button and search for the message file attached to the file downloaded from the web.



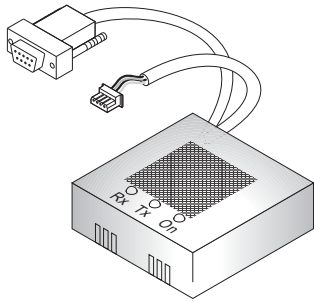
7. Select the message file and press open. The file will appear selected in: «Message file»; press the 'OK' button to send it to the central unit.



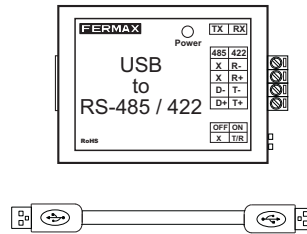
8. Exit the application.



9. Set dipswitch 4 to OFF and reset the central unit.



2466 (RS232)



24661 (USB)

● Módulos para actualizar el fichero de mensajes en la unidad central.

El módulo 2466 dispone de dos conectores; uno de ellos se conecta al puerto serie del ordenador mientras que el otro se conecta al Conector de Programación por PC que dispone la unidad central.

El módulo 24661 dispone de dos conectores; uno de ellos se conecta al puerto USB del ordenador mientras que el otro se conecta al Conector de Programación por PC que dispone la unidad central.

Para el correcto funcionamiento del módulo USB 24661 es necesario instalar en el PC el driver del interfaz suministrado con el módulo.

● Modules for updating the message file in the central unit.

Module 2466 has two connectors; one of them is connected to the computer's serial port while the other one is connected to the PC Programming Connector on the central unit.

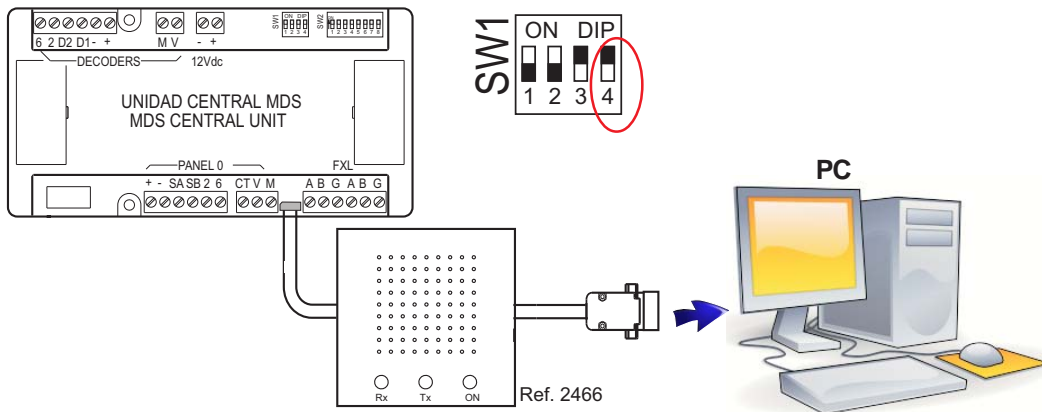
Module 24661 has two connectors; one of them is connected to the computer's USB port while the other one is connected to the PC Programming Connector on the central unit.

To properly operate the USB 24661 module, you must install in the PC the interface driver supplied with the module.

● Módulos de Conexión para actualizar la Unidad Central

● Updated central unit. Installation modules

2466



24661

