

**FERMAX**

**Application user manual  
FERMAX BLUETOOTH  
PC - PDA**

Software version V1.08  
Code 97589I V07\_10

Code 97589I, V07\_10

Technical information booklet published by FERMAX ELECTRONICA S.A.E.

As part of its policy of constant improvement, FERMAX ELECTRONICA S.A.E. reserves the right to modify the content of this document and the characteristics of the products referred to in it at any time and without prior notice.

Any modification will be reflected in subsequent editions of this document.

# Table of contents

<b>Prerequisites</b> .....	4
<b>Installation</b> .....	4
<b>Introduction</b> .....	6
<b>Main Menu</b> .....	7
Putting the receiver into configuration mode .....	9
Find receiver.....	10
<b>Parameters</b> .....	12
Mode .....	13
Power .....	14
Opening time .....	14
Repeating period .....	14
User PIN.....	14
Administrator PIN .....	15
Receiver Name.....	16
<b>User management</b> .....	17
Add.....	18
Modify.....	19
ReadBK / WriteBK.....	20
Read File .....	20
Save File .....	21
Delete .....	22
Empty List.....	22
Search dev. ....	22
<b>*Class II-III</b> .....	25
Start Search .....	25
Delete Device .....	26
Modify Device.....	26
Empty List.....	26
Export list.....	26

**NOTE: Clase II-III: Opciones no disponibles en PDA.**

## Prerequisites

- PC equipped with Bluetooth connection.
- With Microsoft or Widcomm Bluetooth stack.
- With Microsoft® Windows XP or higher operating system.

Note: If your PC does not have a Microsoft or Widcomm Bluetooth stack, ask the manufacturer how to update the Bluetooth stack to that of Microsoft or Widcomm.

**Note: This program can only be used to operate on Bluetooth 1.30 and later receivers.**

## Installation

The application is installed using the **standard Microsoft procedure** for installation of applications on computers.

A file is used to install the application:  
"setup\_bluekey\_pc.exe"

Simply deposit this file in any of the PC's subdirectories and double click on it for the installation process to start automatically.

If at this point in the installation of the application you are asked to install Microsoft's ".NET Framework 2.0" you can either download it from the Microsoft website or use the installable included in the CD called "dotnetfx.exe" to then launch "setup\_bluekey\_pc.exe" again.

When the installation process has finished:

- ✓ The "BluekeyPC" subdirectory will have been created in the specified location during the installation process (by default (C:\Program Files\Fermax\)). This subdirectory stores all the files necessary to execute the program (the executable file FermaxPC.exe, the xml programming language files, any additional user lists, etc).
- ✓ A direct access will have been created on the PC desktop to launch the FermaxPC application.

## Introduction

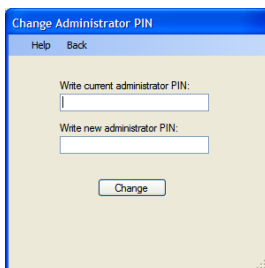
Welcome to Bluekey Fermax PC. Fermax PC Bluekey (BFPC) is an application that enables the user to administrate the Bluekey receiver for Fermax from a computer. The BFPC will help the administrator precisely configure the receiver using a series of simple, intuitive menus.

Note that you don't need to reconfigure the receiver if you want to work with the ex-factory default configuration.

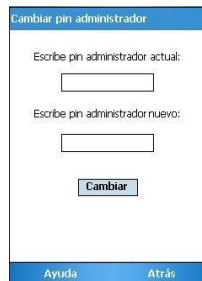
### Note about this manual

The images on the screens shown in the manual correspond to the PC application. The appearance of screens in the Fermax Bluetooth application varies, depending on the type of equipment used, PC or PDA. Nonetheless, the information shown, the visible text labels and the order of the data fields are the same in both cases.

Example:

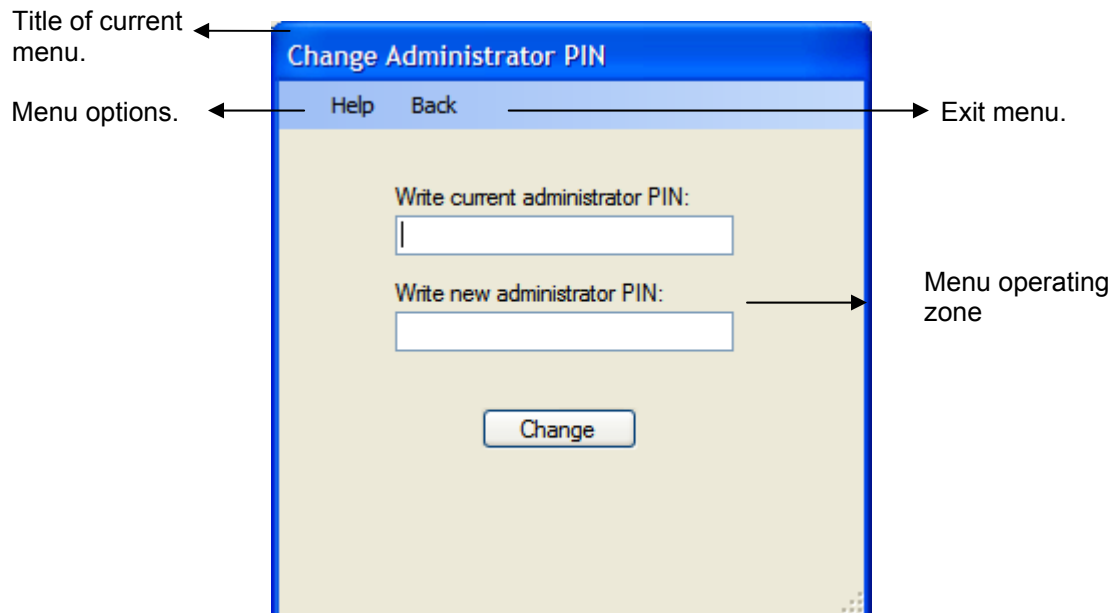


PC application screen



PDA application screen

The general layout of the menus throughout the application will be as follows:



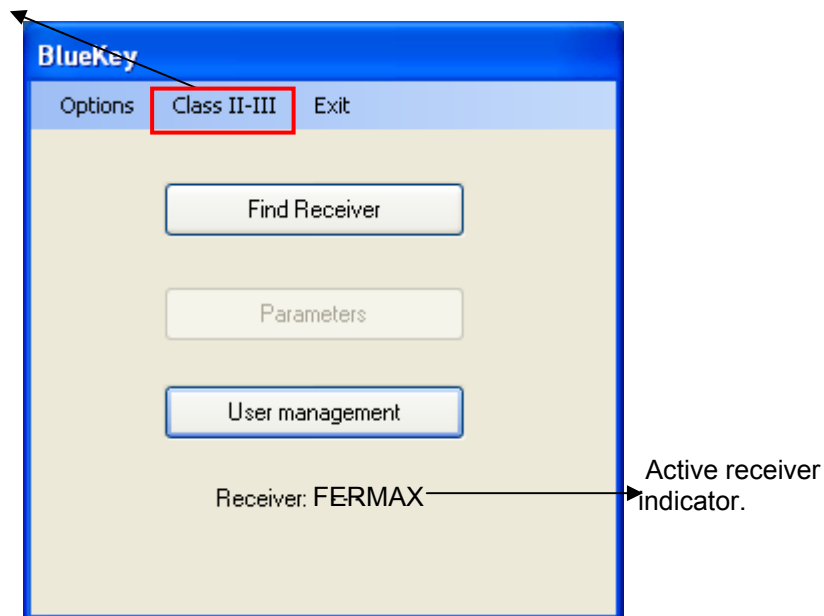
0. General layout of menus.

## Main Menu

The main BFPC menu includes the following functions:

- **Find receiver:** enables you to create a Bluetooth connection with the desired receiver device in order to subsequently be able to operate on it.
- **Parameters:** enables you to manage the operating parameters of the receiver device.
- **User management:** enables you to manage user lists, create new ones from different sources, and also upload or update them from the receiver.

The option "Class II – III is not available in PDA



1. Main Menu

The menu also provides additional information on which receiver is active at this moment. When you initially execute the application, the "Parameters" button is disabled and the receiver indicates that there are none active. The "Parameters" button will remain disabled until a connection is made to the receiver.

## Putting the receiver into configuration mode

There are three ways to go into configuration mode:

1. Switch off the receiver. On a telephone, PDA or PC, enter the Bluetooth name "ADMMAN" and switch the receiver on again. After correctly entering the administrator PIN, the action will be executed to force the receiver to go from standard mode into configuration mode.
2. With the receiver operating in standard mode, and without having to turn it off, with a pencil or ballpoint pen press on a small push button on the board underneath the leds. The receiver comes out of standard mode and goes into configuration mode while a short sound indicator is emitted in the buzzer.
3. If the PC or PDA with which you wish to configure the reader also did this the previous time, if you have the Bluetooth connection on the reader will automatically request the administrator PIN code and if it is correct will go into configuration mode. **Note: it is very important, if the configuration PC is in the vicinity of the reader, to disconnect or suspend its Bluetooth interface to avoid the reader continuously requesting the administrator PIN and failing to respond to user phones while awaiting the PIN code.**

To return to standard operation mode, there are three alternatives:

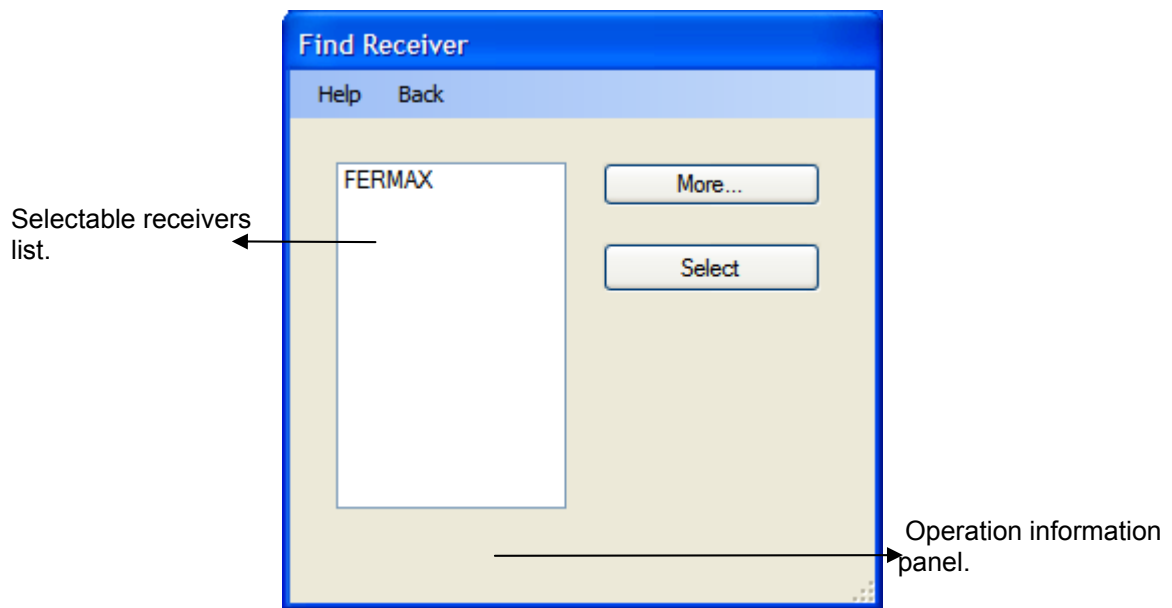
1. With the receiver operating in configuration mode, and without needing to switch it off, press the push button we described above. The receiver goes from configuration mode into standard mode. At this moment a longer sound indicator is emitted in the buzzer than in the previous case.
2. If the receiver is in configuration mode and five minutes pass from the last configuration action executed, it will automatically switch back over to standard mode.
3. When the application ends a command is automatically sent to the receiver which takes it out of configuration mode and back into standard mode.

## Find receiver

- **Important: in order to be able to find and operate on the receiver, it must be in configuration mode.**

This menu enables the device to search for the receiver on which it is going to operate. To do this, it carries out a search for the available ones.

When the search has ended and the device has been located, the administrator must be paired with the receiver. For this, the administration PIN is used as a pairing code (by default "4444"). If this operation is successful, a connection will be established between the two, which will enable it to operate on the destination. This action will avoid future pairings, unless certain special circumstances occur later (receiver reboot, five-minute timeout consumed, pressing the button, changing the administrator PIN).



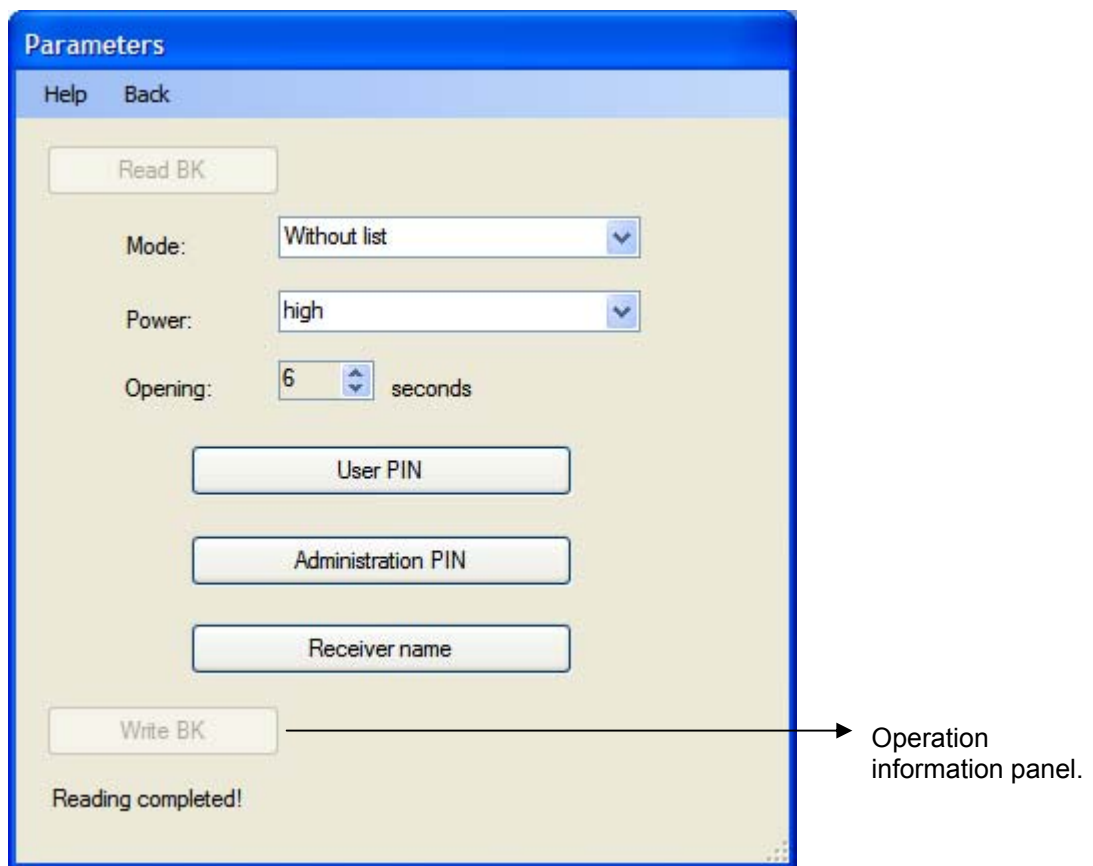
2. Find receiver menu

- The **Search /More** button: enables the administrator to search for the receiver. Those detected will be added to the list of selectable receivers.
- The **Select** button: enables the administrator to establish a connection between the source device and the receiver to subsequently be able to operate on it.



## Parameters

This menu enables the administrator to get an overall view of the receiver's operating parameters. The menu has 7 basic parameters: the operating mode, the power, the opening time (in seconds), the repeat time (the time is in tens of seconds), the management of the administrator PIN and the name of the receiver. Each one of them is totally configurable and determines the behaviour of the receiver.



3. Parameters

- The **Read BK** button recovers the receiver's current operating parameters and enables them to be viewed in the different elements of the menu.
- The **Mode** drop-down menu enables us to change the current value of the operating mode.
- The **Power** drop-down menu enables us to change the current value of the power.
- The **Opening** arrows enable us to increase or reduce the value of the opening time.

- The **Repeats** arrows enable us to increase or reduce the value of the repeat time. By 10-second intervals.
- The **User PIN** and **Administration PIN** buttons enable us to change the current values of the PINs.
- The **Receiver Name** button enables us to change the name of the receiver.
- The **Write BK** button enables us to permanently transfer the parameter configuration information to the receiver.

## Mode

The Mode drop-down menu enables the administrator to adjust the current operating mode value. In this menu, you can choose from among 6 values:

a) With list, Automatic: this mode defines the existence of a list of authorised users, but without requiring PINs (automatic opening).

b) With list, with confirmation PIN: this mode defines a, b and c are only for Class I, the existence of an authorised users list and executes the opening using a key ("1") as the password.

c) With list, with PIN: This mode defines the existence of a list of authorised users, and opens using the specified 4-digit PIN as the password.

c) Without list, with PIN: In this mode, there is no list of authorised users and a 4-digit PIN is not used as a password.

e) Without list, with confirmation: This mode is only valid in class II/III. A confirmation will be requested from all phones in order to send it to the door controller.

c) Without list, with PIN: This mode is only valid in class II/III. The PIN code will be requested from all phones and if correct will be sent to the door controller.

## Power

This drop-down menu enables us to adjust the range of coverage for the power, choosing from among three coverage range:

a) Short: This mode defines a coverage range of approximately a couple of metres.

b) Medium: This mode defines a coverage range of approximately ten metres.

c) High: This mode defines a coverage range of more than approximately ten metres.

## Opening time

Drop-down menu that enables us to define the time the door remains open. It is defined as a numerical value from 1 to 99.

## Repeating period

Dropdown menu that enables us to define the value of the repeating period. It is defined as a numerical value from 10 to 90 (in tens). There is no point in defining intermediate values (15, 23) because the precision is very limited.

## User PIN

This menu appears when we press the "User PIN" button in the Parameters menu. To change the PIN, enter the new PIN in the corresponding field. Remember that the PIN entered must have exactly 4 digits (0-9).

Change User PIN

Help Back

Write new PIN:

Change

4. User PIN

## Administrator PIN

This menu appears when we press the “Administrator PIN” button in the Parameters menu. To change the Administrator PIN, enter the current Administrator PIN in the corresponding field. Then, enter the new Administrator PIN, which must have exactly 4 digits (0-9).

Change Administrator PIN

Help Back

Write current administrator PIN:

Write new administrator PIN:

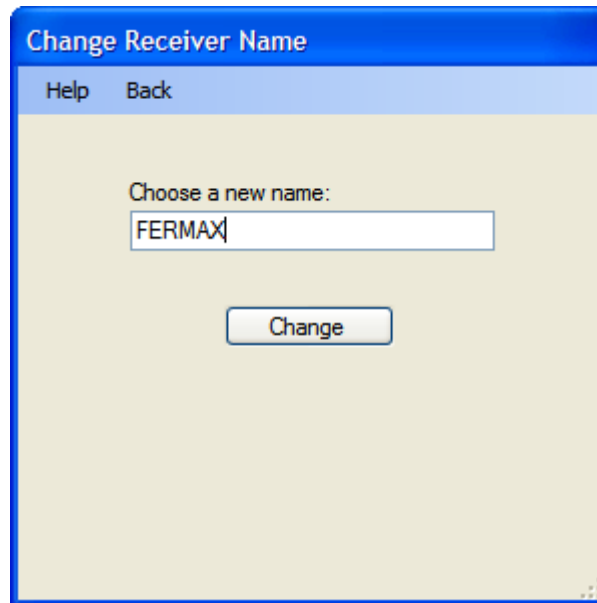
Change

4. Administrator PIN

## Receiver Name

To change the current name of the receiver, enter the new name in the corresponding field. This name must have a maximum of 10 characters and must not contain any blank spaces. Nor are accentuated characters or the letter Å± permitted.

Note: Due to the internal management of Bluetooth links carried out by the different operating systems of the devices (PC, PDA, mobiles), it may happen that, if a device was paired with a receiver and then the name of the receiver is changed, in the next connection with the receiver the old name may appear, even though it has been changed correctly on the receiver. In general, this only happens the first time after the change of name. If you wish, you can avoid this by deleting the old link on the device after the change of name on the receiver.

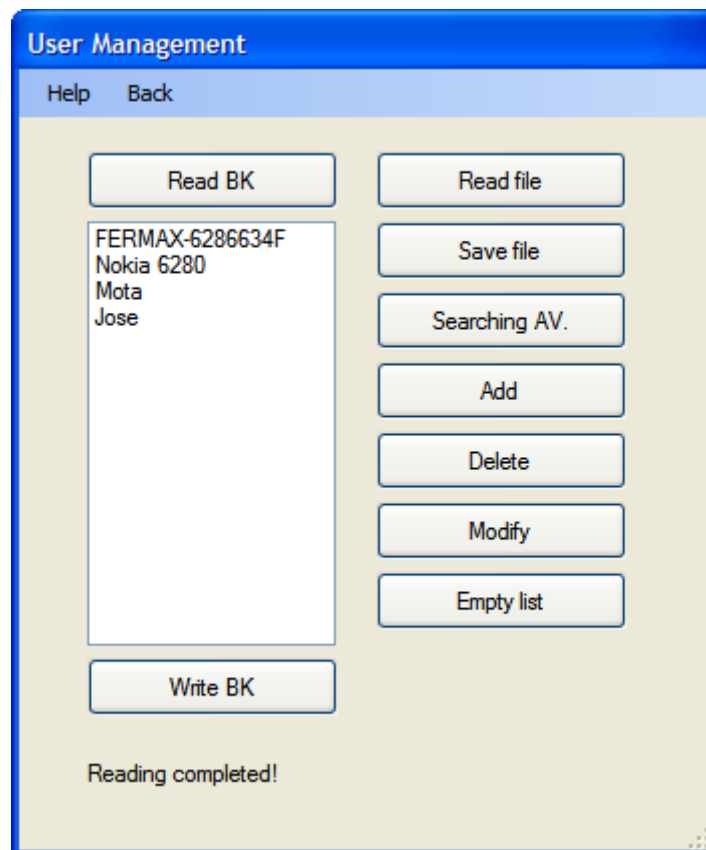


The image shows a software dialog box titled "Change Receiver Name". At the top, there is a blue header bar with the title. Below the header is a light blue bar containing "Help" and "Back" buttons. The main content area is light beige and contains the text "Choose a new name:" followed by a text input field. The input field contains the text "FERMAX". Below the input field is a "Change" button.

6. Receiver name

## User management

This menu enables the administrator to manage the list of users accepted by the receiver, up to a maximum of 40 users.



7. User management

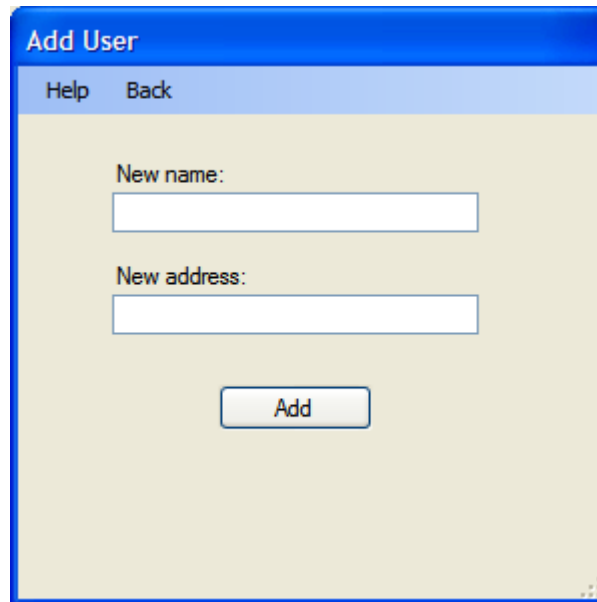
Note that the list maintenance operations, with the exception of **ReadBK** and **WriteBK**, are local actions on the PC and will only become effective if they are transferred to the receiver using the **WriteBK** button.

- The **ReadBK** and **WriteBK** buttons on the receiver enable us to receive or send the list of authorised users from/to the receiver respectively.
- The **Read File / Save File** buttons are used for the management of files in this menu.
- The **Search phone devices** button is used to search devices in the vicinity.
- The **Add/Delete/Modify** buttons are used to manage users in the list.
- The **Empty List** button enables us to delete all the users in the list.
- Currently unoccupied receiver positions will be described with the word "[Empty]".

## Add

This menu enables us to add new users to the list of those accepted. To add a new user, enter the new name in the corresponding field. The chain entered must be a maximum of 16 characters.

Proceed in the same way with the Bluetooth address of the user to be added. The address must be a maximum of 12 hexadecimal characters. Once you have entered this data press the "Accept" button to validate the data and if correct include them on the first available space on the list.

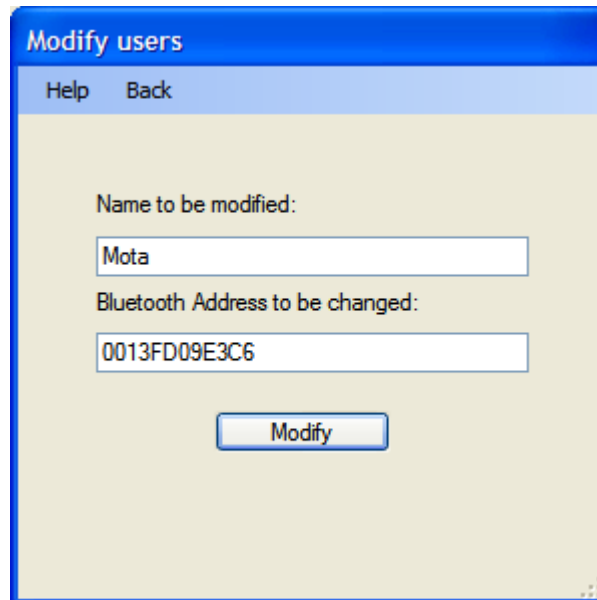


The image shows a software dialog box titled "Add User". At the top, there is a blue header bar with the text "Add User". Below this, there is a light blue bar containing two buttons: "Help" and "Back". The main content area has a light beige background and contains two text input fields. The first field is labeled "New name:" and the second is labeled "New address:". Below these two fields is a single button labeled "Add".

8. Add user

## Modify

This menu, practically identical to the previous screen, enables us to change the name of an existing user in the authorised users list. If you, as administrator, wish to modify a user, select the user. Then all you have to do is fill in your name in the text field containing the current user name to be modified. The new text entered must have a maximum of 16 characters. You can also modify the Bluetooth address, which has 12 hexadecimal characters. To validate the changes and execute the modification press "Modify".



9. Modifying a user

## ReadBK / WriteBK

The “Read BK” operation enables us to transfer the list of authorised users from the receiver to the application and work on it locally. “Write BK” sends this local user list to the receiver in order to save them permanently.

- **Important: when carrying out the action “Write BK”, the list previously existing on the receiver is deleted and replaced with the application’s local list.**

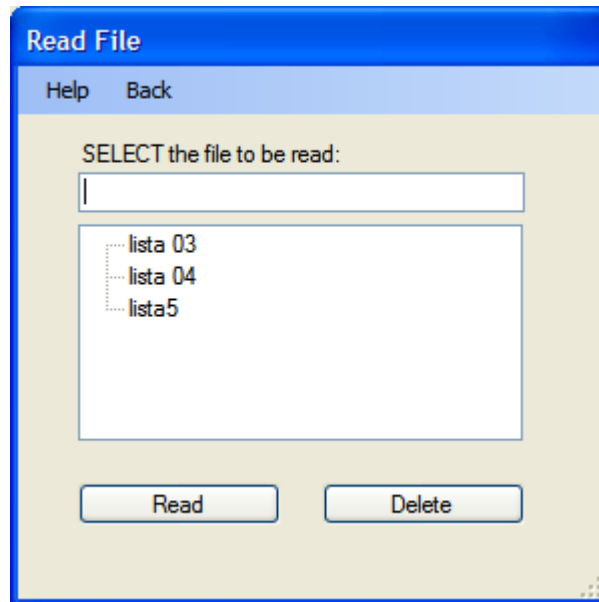
## Read File

The Read File operation enables us to transfer the list contained in the file to the local list of the application and thus be able to work on it.

This operation will facilitate the task of applying the same list of authorised users on several receivers. To read a file, it is necessary to specify the name of the file so that this can be uploaded.

This menu will also enable us to delete the existing files in the file directory.

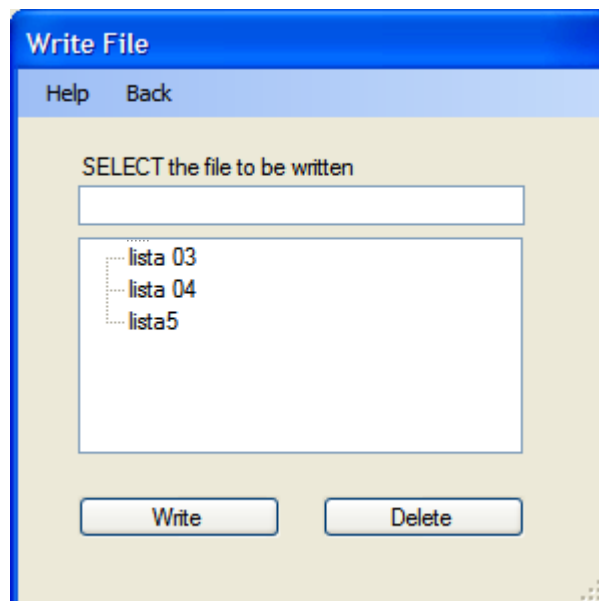
On reading the file the users are added to those already existing on the local list.



10. Reading a file

## Save File

The Save File operation enables us to transfer or record the local list in a file in order to save it.



11. Saving a file

As with the previous one, this operation will facilitate the task of applying the same list of authorised users on several receivers. To write a file, it is necessary to specify the name the file is going to be saved with. This menu will also enable us to delete the existing files in the file directory.



## **Delete**

Delete is an operation that is applied on the local list of users. To delete a user from the list, select the user you want to remove and then click on the delete button.

## **Empty List**

Empty list will delete all the users in the local list of the application.

## **Search dev.**

Search dev. enables you to find new users (nearby Bluetooth devices) that you wish to add to the local list.

This menu has the options we have already seen (Reader Detection, Parameters and User Management) plus the following options:

## Conversion

This option enables us to translate a phone's code to the Wiegand or Data Clock format selected, when the reader is working in Class II/III mode.

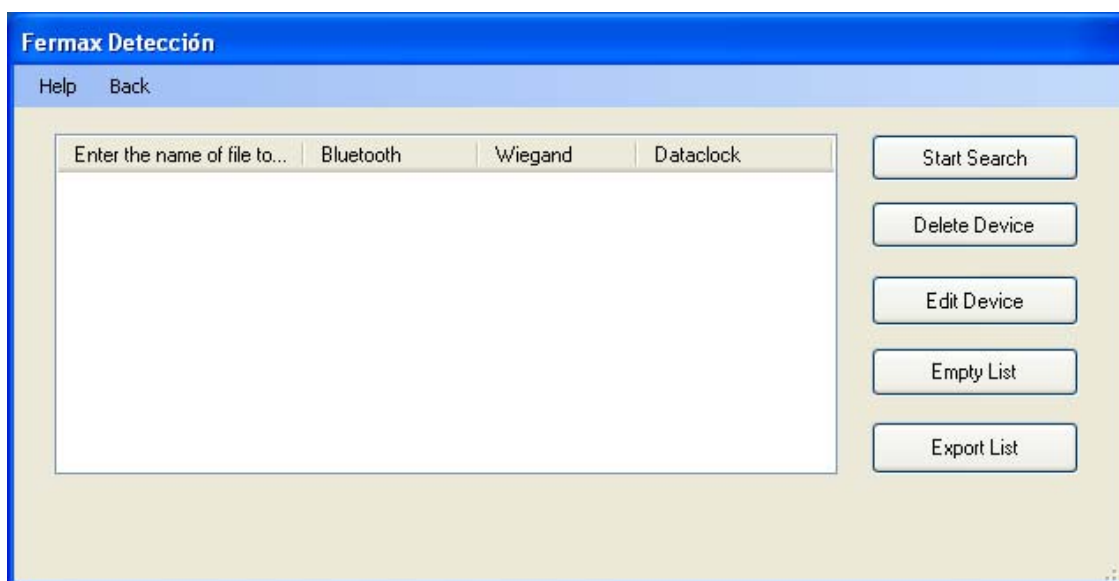
These codes are the ones that will be registered in the MDS (WincomPlus Software) or CAC (CAC Software) application.

## Language

This option enables us to change the application's language.

## Class II-III (Options not available in PDA).

This menu enables the administrator to manage the list of detected devices in order to then transfer it to the class II and III management applications. It also provides us with the phones' bluetooth addresses in order to register them via Management.



12. Fermax detection

### Start Search

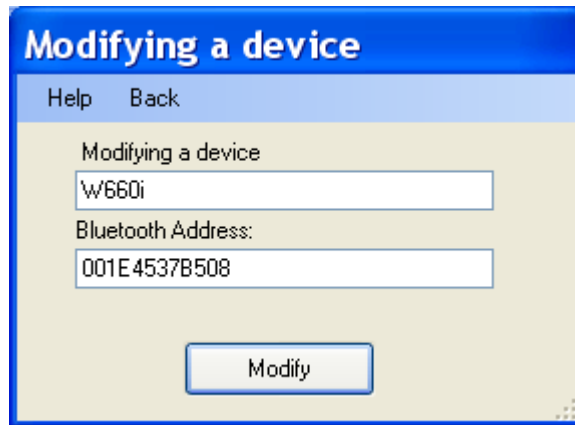
The start search option enables you to find new users (nearby Bluetooth devices) that you wish to add to the local list.

### Delete Device

The delete device operation is applied to the local list of devices encountered. To delete a device from the list, select the device to be deleted and press the "Delete Device" button. The device will then be deleted.

### Modify Device

This menu enables us to change the name of an existing user in the encountered devices list. If you, as administrator, wish to change the name, all you have to do is fill in this change in the text field showing the current name of the device to be modified. The new text entered must have a maximum of 16 characters. You can also modify the Bluetooth address, which has 12 hexadecimal characters. To validate the changes and execute the modification press "Modify".



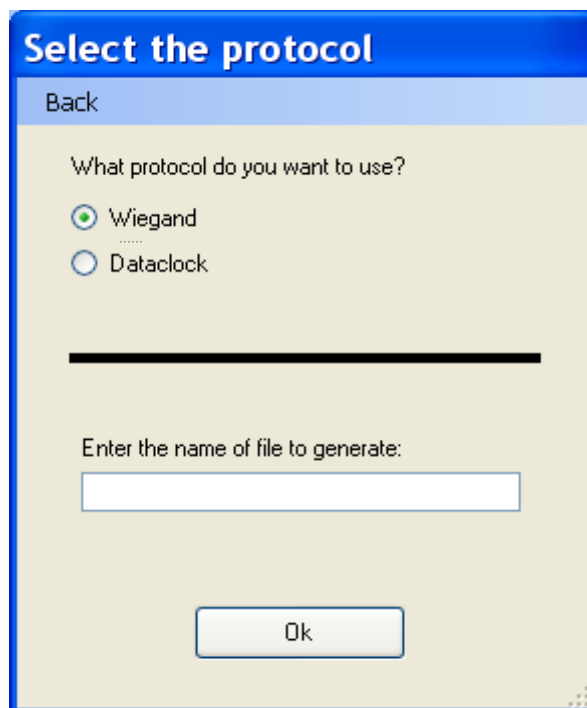
13. Saving a file

## Empty List

Empty list will delete all the devices available in the application's local list.

## Export list

The export list enables us to save the local list's Wiegand or Dataclock names and addresses in a text file for their keeping. The first step is to select the type of addresses to which you want to export the file. Then, select the location of the file you are going to export the data to.



14. Select protocol

This operation will facilitate data management for you as administrator, as it gives you the power to transport the data obtained through this operation to other programs (Wincom+ or CAC).







**FERMAX**

Audio and Video Door Entry Systems

[www.fermax.com](http://www.fermax.com) | [fermax@fermax.com](mailto:fermax@fermax.com)