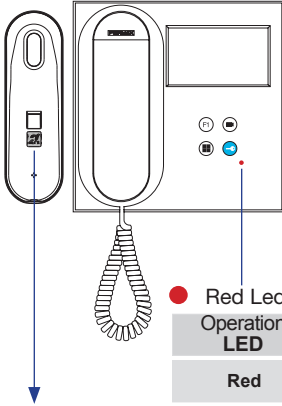


# USER'S QUICK GUIDE: DUOX PLUS VEO MONITOR

## CONTROL BUTTONS / LED



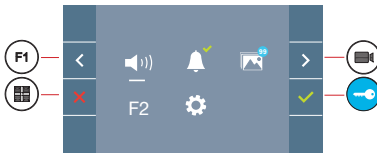
- Digital menu for internal parameter settings and configuration. (When the monitor has already been programmed)
- In conversation, press to open the door.  
In standby, call to guard unit (if applicable).
- F1** Auxiliary function, (contact your installer).
- In standby, press and it displays the option of auto-starting with different panels. By sequentially pressing Panel 0, Panel 1, General Panel, (depending on the available panels).

**Red Led**

Operation LED	Not programmed	Standby	Call Called	Do not Disturb Mode	
Red					<ul style="list-style-type: none"> <li> Switched on</li> <li> Slow blinking</li> <li> Fast blinking</li> </ul>



Induction loop label. Located at the internal part of the receiver. (Depending on the model).

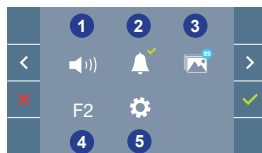
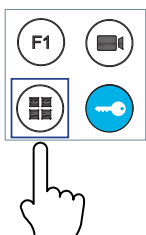


VEO monitor incorporates an OSD menu that is managed via the monitor's push buttons. The icons displayed are managed with the corresponding buttons located on the monitor.

The white line at the bottom of the icon indicates the function that is currently in effect.

Select with / the desired icon and confirm with .

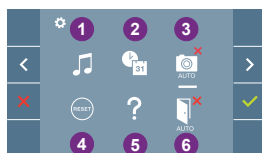
## USER MENU



- 1** Monitor volume settings
- 2** Do Not Disturb function
- 3** Display images
- 4** F2 Function
- 5** User parameter settings



## USER PARAMETER SETTINGS



- 1** Melody selection
- 2** Date and time settings
- 3** Enable/Disable image capture
- 4** User Reset
- 5** User help
- 6** Enable/Disable Doormatic



## USER MENU

1 Monitor volume settings

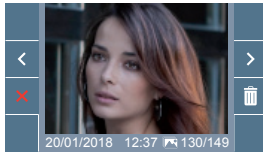
2 Do Not Disturb function:

: The call is not heard.

: The call is heard, (by default normal operation is selected).

3 Display images: To display the various photos taken with the date, time and the photo number.

When a call is made from the outdoor panel, a photo is automatically taken 5 seconds later and stored in the memory. The image capture function must be pre-selected, see screen «USER PARAMETER SETTINGS», (option 3).



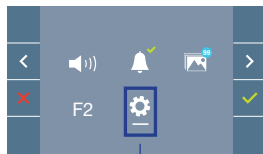
: To select/view the photos stored.

: To clear images.

: To cancel and go to the previous screen.

4 F2 F2 Function (extra function, check with your installer).

5 User parameter settings



Within the USER MENU, selecting the option «USER PARAMETER SETTINGS» will access a new screen corresponding to the various configuration parameters.

Select with the icon and confirm with .

## USER PARAMETER SETTINGS



- 1 Melody selection
- 2 Date and time settings
- 3 Enable/Disable image capture
- 4 User Reset
- 5 User help
- 6 Enable/Disable Doormatic

1 Melody selection:

: Panel melody selection: It can be changed the melody that you hear on the monitor when a call is made from outdoors.

: Concierge melody selection: It can be changed the melody that you hear on the monitor when the concierge calls that monitor.



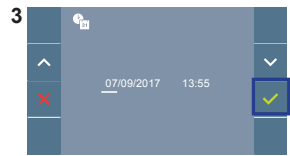
## 2 Date and time settings



With select the icon and confirm with



With select the date format. Once selected confirm with



Select the date and hour with and confirm . To browse the settings .

Date not set: 01/01/2017 (default). The icon appears indicating that the date is not correct (default date). Upon losing power, it returns to the default date.

Note: If an image is captured with the date not yet set, the following icon appears

### Notification icons for a date not set:



#### User Menu Screen

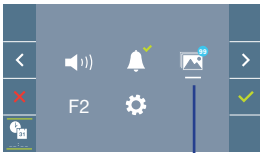
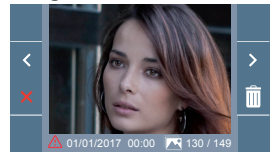


Image Viewer

#### Communication screen



#### Image viewer screen



## 3 Enable / Disable image capture

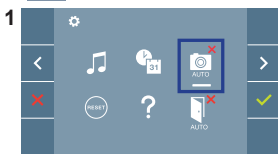
The monitor can take an automatic picture within 5 seconds of receiving a call from an outdoor panel.



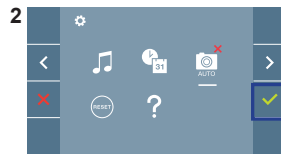
: The image capture function not selected, (by default).



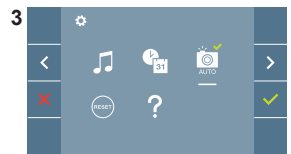
: The image capture function selected.



With select the icon and confirm with



Press to activate/deactivate the function.



**Notice:** According to the European Union legislation about data protection ((EU) 2016/679), the capture of images may be restricted. This feature is deactivated by default in all monitors, although can be activated at your own responsibility. Furthermore, the legislation may force to place a sign next to door stations, indicating that monitors can capture images. You can download it at <https://www.fermax.com/intl/en/corporate/utilities.html>.



DUOX plus

FERMAX

4 **User Reset:** Reset the user's configuration parameters.

5 **User help**



QR code that allows access to a promotional link that explains in detail the digital DUOX PLUS system that Fermax has created.

6 **Enable /** **Disable Doormatic**

Option that allows automatic door opening when a call is made.

The function must be pre-selected, check with your installer, (depending on configuration).



: Doormatic function not selected, (by default).



: Doormatic function selected.

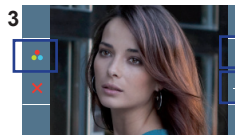
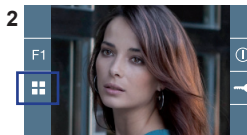
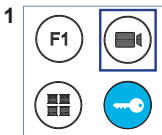


## SETTINGS

### 1. MONITOR SETTINGS

#### VIDEO SETTINGS

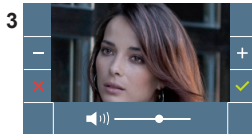
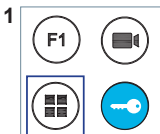
With an image on the monitor, by pressing the button or upon receiving a call without establish communication, press the key to show the **video settings**.



Seleccionar la opción del ajuste e ir aumentando o decrementando con y .

#### AUDIO SETTINGS

While the audio channel is open, (established communication), press the button and a menu screen appears for this setting.



Increase or decrease with and , until obtaining the desired regulation.

**Notice:** The adjustment potentiometer can be used as well.

**Notice:** Maximum conversation time: 90 seconds.

MANUAL FULL MONITOR

