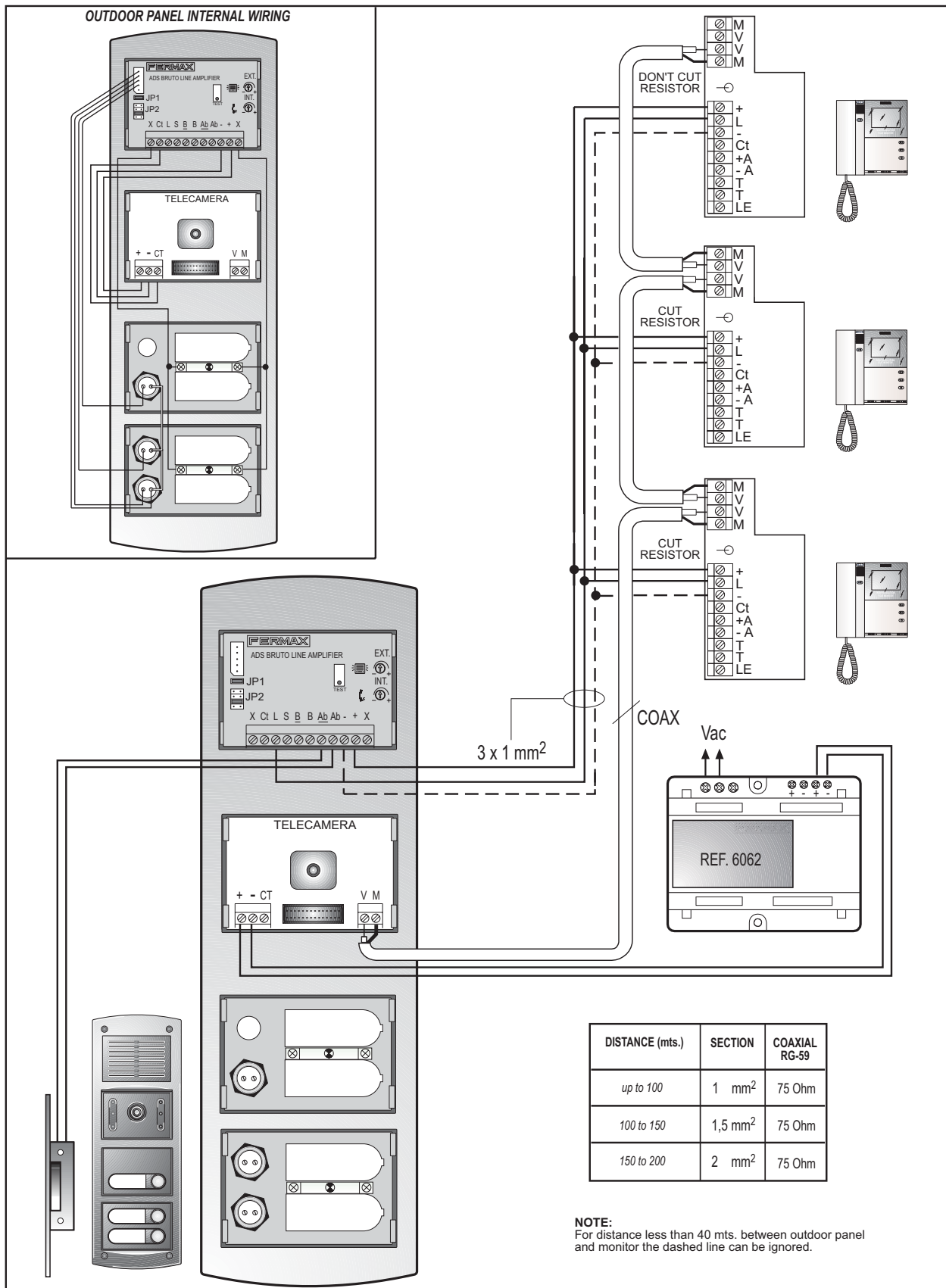


COD. 618.003.933

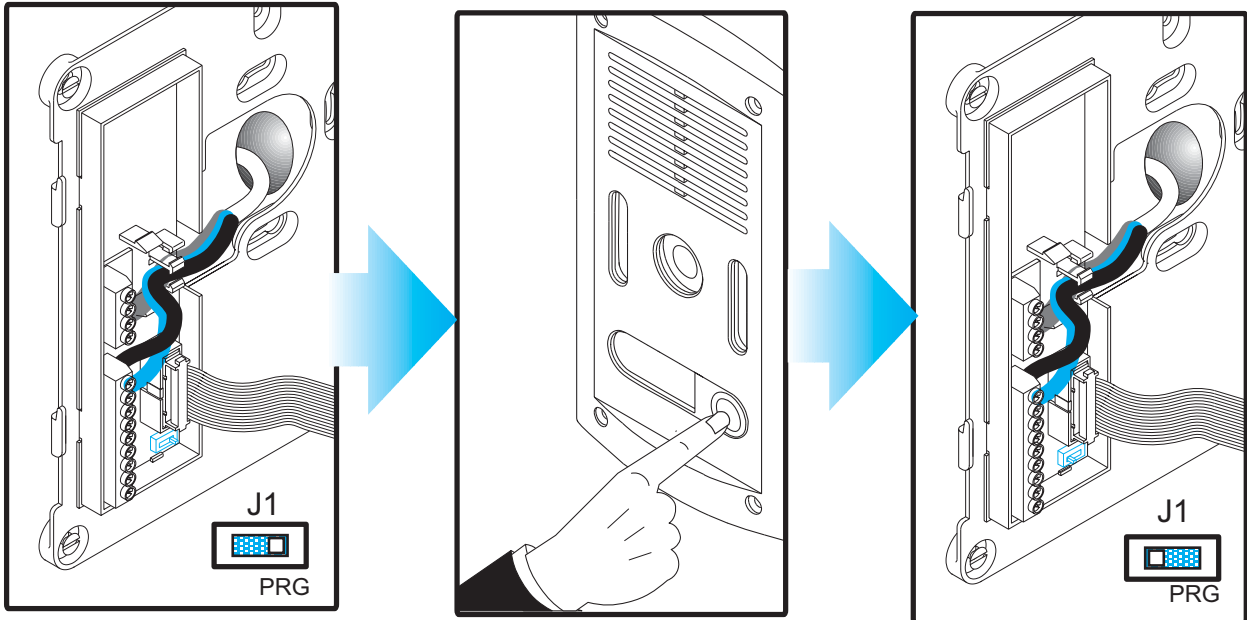
3 LINES SURFACE VANDAL RESISTANT AUDIO/VIDEO ENTRY Ref. 2625

**FERMAX**  
COD. 94675/Prov. V. 09/00



## MONITOR CONFIGURATION

Before programming, the system must be fully wired, the handset on hook and the **Monitor** connected as shown below.



1. Put the switch J1 to the **PRG** position. A confirmation sound will be heard.

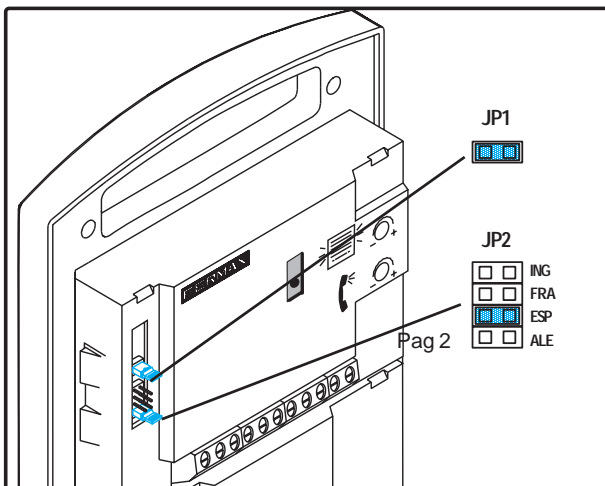
2. Press the button which will identify the **Monitor**. Once again confirmation is generated.

3. Put back the switch to original position and hang up the **Monitor**.

Time between steps 1 and 2 must not be longer than 2 minutes. In case this would occur, put back the switch to its original position and restart the sequence.

## OUTDOOR PANEL SET UP

The **Outdoor Panel** must be set up depending on the type of installation, using the jumpers in the rear side of the amplifier.



\* The jumper JP1 must be always connected, except when having 2 **Outdoor Panels**, in which case the jumper in one of them will be removed. The only programming will become from the outdoor panel that has JP1 place.

\* Select the language of the door open message by means of JP2: english (ING), french (FRA), spanish (ESP) and german (ALE). cod.94544