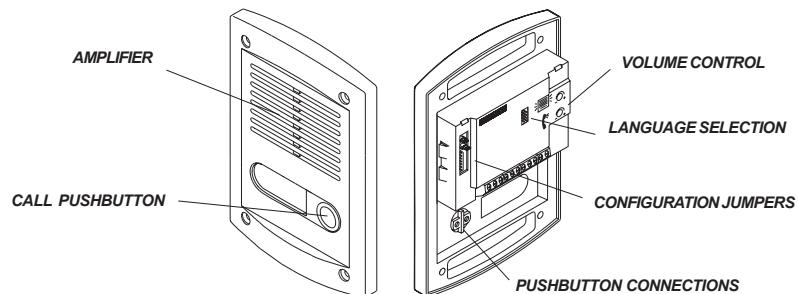
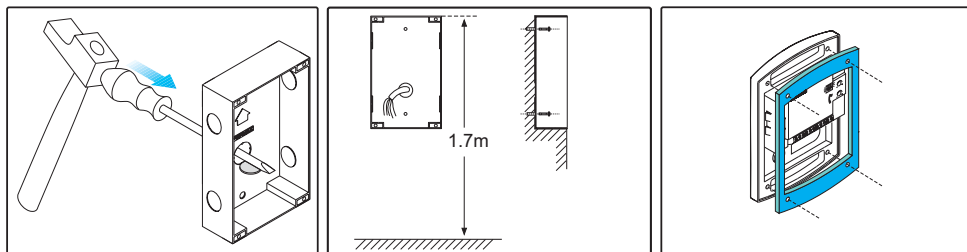


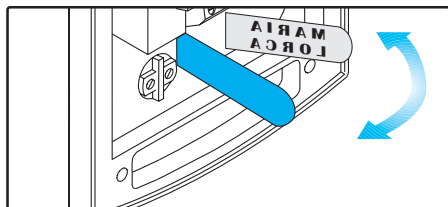
FERMAX

Cod. 94545I

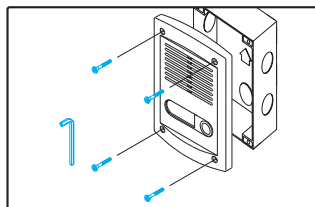
V07/05

1 LINE AUDIO BRUTO KIT REF: 2235**Installation**

Before embedding the box, break the flange where the wires have to be passed through. You could reinforce the subsection of the box with the screws of anchorage that are included. Place the waterproof tape supplied in the KIT.



Push up the cover behind the nameplate and place one label on it. You can use one of the labels supplied with the outdoor panel.



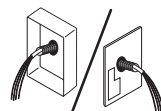
Close the panel and fasten the screws with the Torx key supplied.

Important notes:

The **Outdoor Panel** is protected against humidity and atmospheric agents since it has a protection degree IP 559.

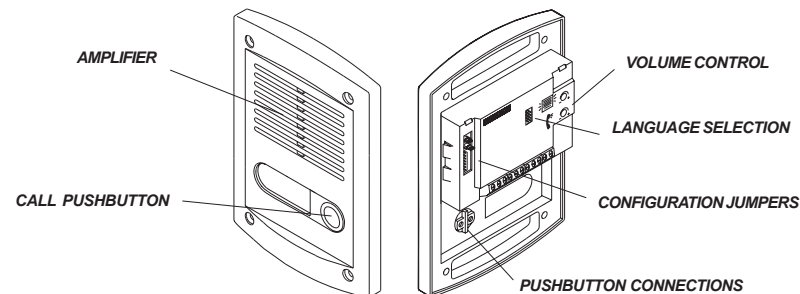
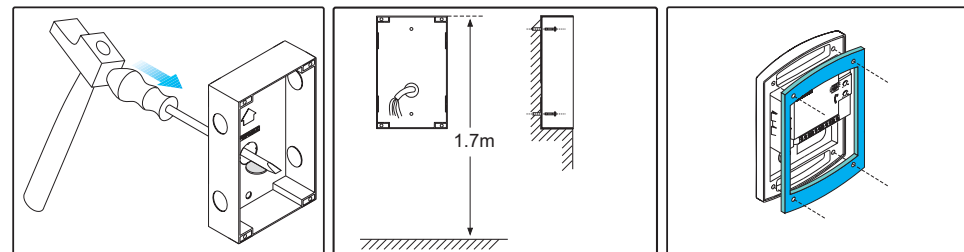
The **Power Supply** should be installed on a hard and flat surface (inside the building, lobby, etc.) but always in inner places. It can be installed in a DIN box for electric switches.

Before installing the **AUDIO BRUTO KIT**, install the cables needed to **Telephone** (or telephones), **Outdoor Panel** and **Power Supply**, following the installation diagram.

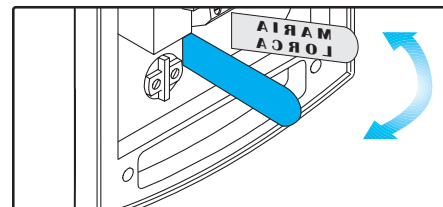
**FERMAX**

Cod. 94545I

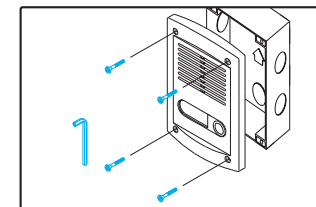
V07/05

1 LINE AUDIO BRUTO KIT REF: 2235**Installation**

Before embedding the box, break the flange where the wires have to be passed through. You could reinforce the subsection of the box with the screws of anchorage that are included. Place the waterproof tape supplied in the KIT.



Push up the cover behind the nameplate and place one label on it. You can use one of the labels supplied with the outdoor panel.



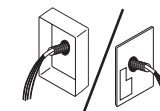
Close the panel and fasten the screws with the Torx key supplied.

Important notes:

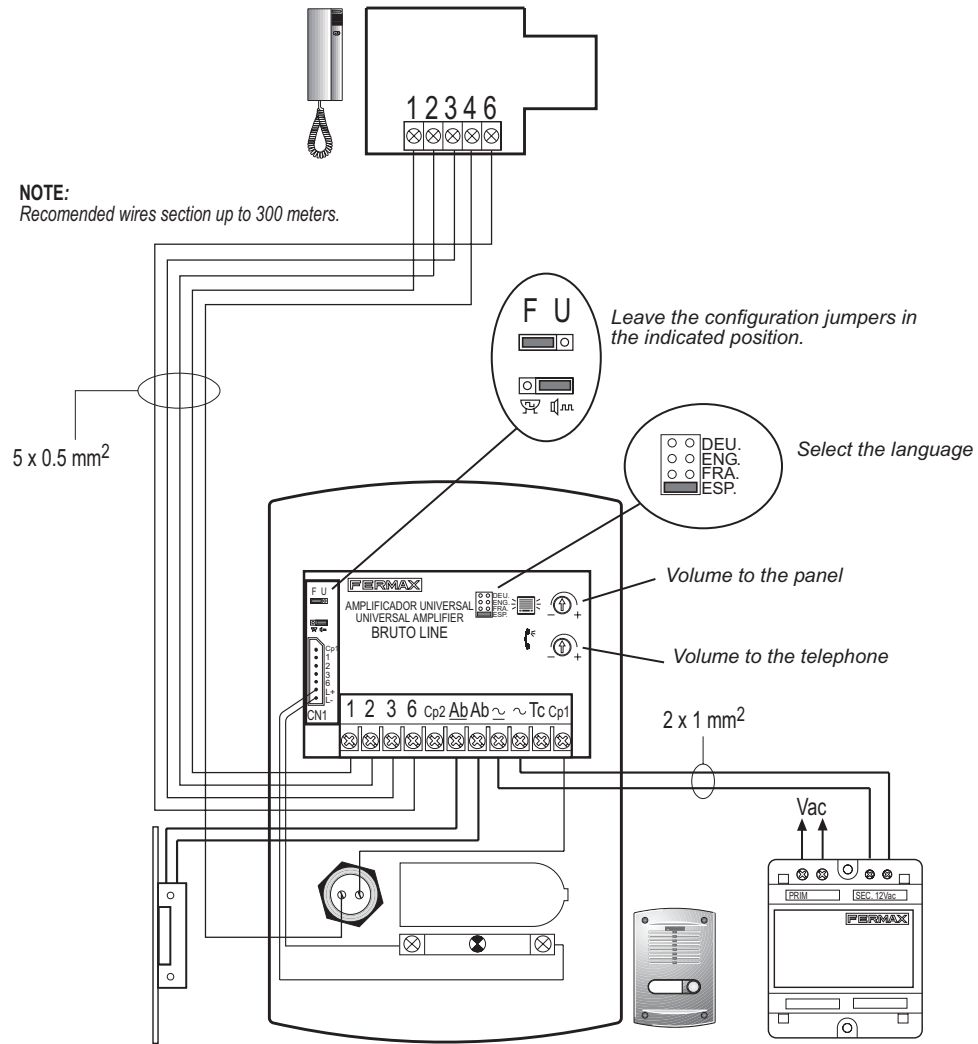
The **Outdoor Panel** is protected against humidity and atmospheric agents since it has a protection degree IP 559.

The **Power Supply** should be installed on a hard and flat surface (inside the building, lobby, etc.) but always in inner places. It can be installed in a DIN box for electric switches.

Before installing the **AUDIO BRUTO KIT**, install the cables needed to **Telephone** (or telephones), **Outdoor Panel** and **Power Supply**, following the installation diagram.

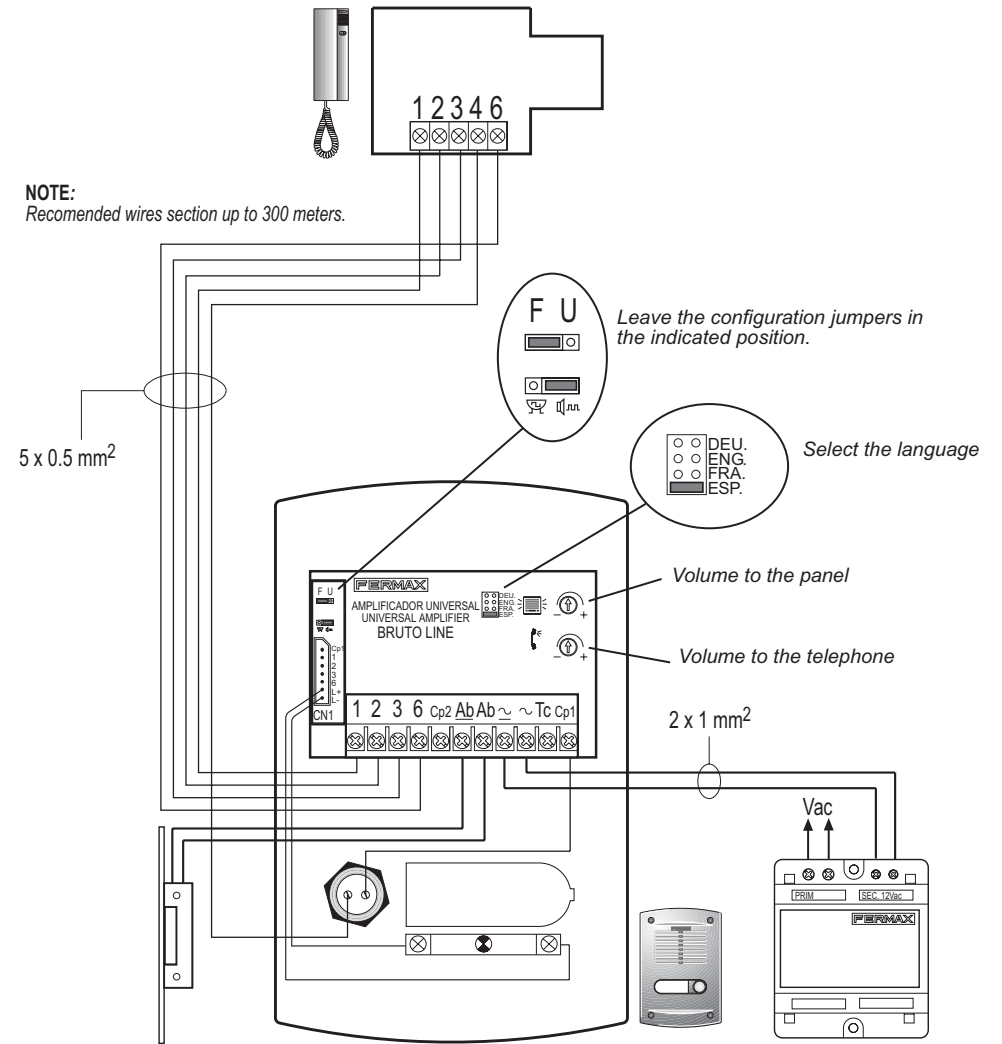


Wiring diagram



TECHNICAL FEATURES	
CONSUMPTION	300 ~ 450 mA
TEMPERATURE	-10 ~ +60 °C
AUDIO POWER:	
TO PANEL	1W max.
TO TELEPHONE	0.15W max.

Wiring diagram



TECHNICAL FEATURES	
CONSUMPTION	300 ~ 450 mA
TEMPERATURE	-10 ~ +60 °C
AUDIO POWER:	
TO PANEL	1W max.
TO TELEPHONE	0.15W max.